



# 2570H SERIES

2.5mm PITCH WIRE TO BOARD CONNECTOR

## ● Specifications

Current rating: 3A AC,DC

Voltage rating: 250V AC,DC

Temperature range:  $-25^{\circ}\text{C}$  to  $+85^{\circ}\text{C}$   
(including temperature rise)

Contact resistance: Initial value/10m  $\Omega$  Max.

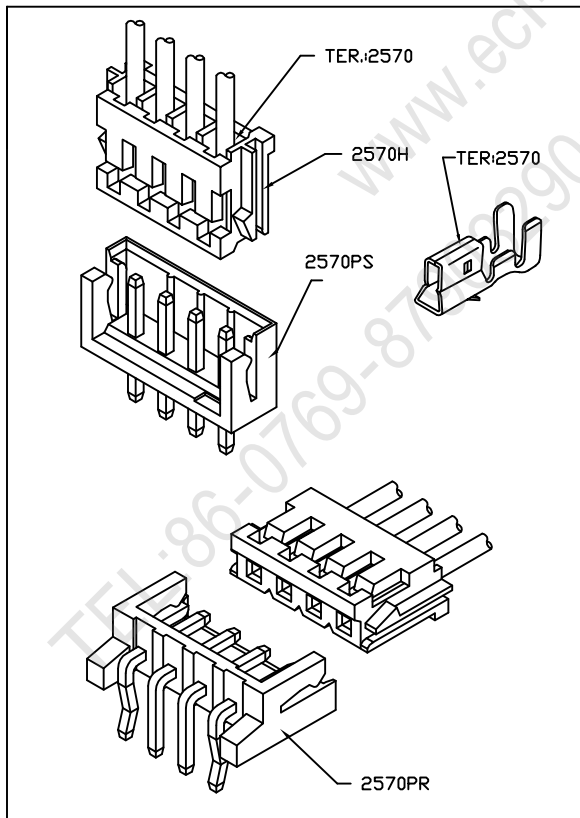
After environmental testing/20m  $\Omega$  Max.

Insulation resistance: 1000M  $\Omega$  MIN.

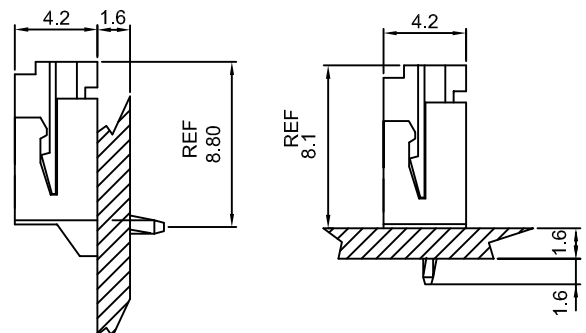
Withstanding voltage: 800V AC/minute

Applicable wire: AWG#24-28

## ● Standards



Assembly layout





**2570H**

2.50mm PITCH CRIMP HOUSING

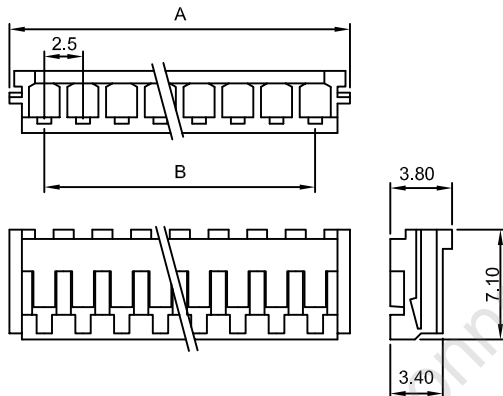
**Features:**

MAT'L: NYLON 66 UL94V-0

MATES: 2570 SERIES TERMINAL

ACCEPTS WITH: 2570PS 2570PR SERIES WAFER

unit:mm



PART NO.	A	B
2570H- 02	7.00	2.5
2570H- 03	9.50	5.0
2570H- 04	12.0	7.5
2570H- 05	14.5	10.0
2570H- 06	17.0	12.5
2570H- 07	19.5	15.0
2570H- 08	22.0	17.5
2570H- 09	24.5	20.0
2570H- 10	27.0	22.5
2570H- 11	29.5	25.0
2570H- 12	32.0	27.5
2570H- 13	34.5	30.0
2570H- 14	37.0	32.5
2570H- 15	39.5	35.0

**2570** 2.50mm PITCH CRIMP TERMINAL

**Features:**

THICKNESS: 0.2mm

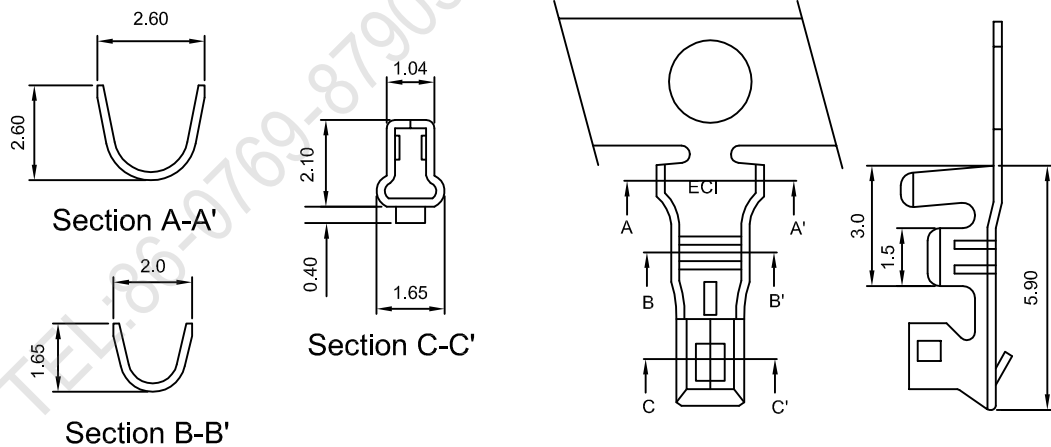
MAT'L: PHOSPHOR BRONZE TIN PLANED

MATES WITH: 2570H SERIES HOUSING

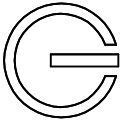
ACCEPTS WITH: 2570PS & 2570PR SERIES WAFER

ACCEPTS WITH: 0.64mm(.025") SQUARE PIN

unit:mm



Part No	Wire Range	Insulation O.D.	Material	Finish	Qty/reel
2570	AWG #24-28	ø1.8mm max	Phosphor bronze	Tin-plated	10,000

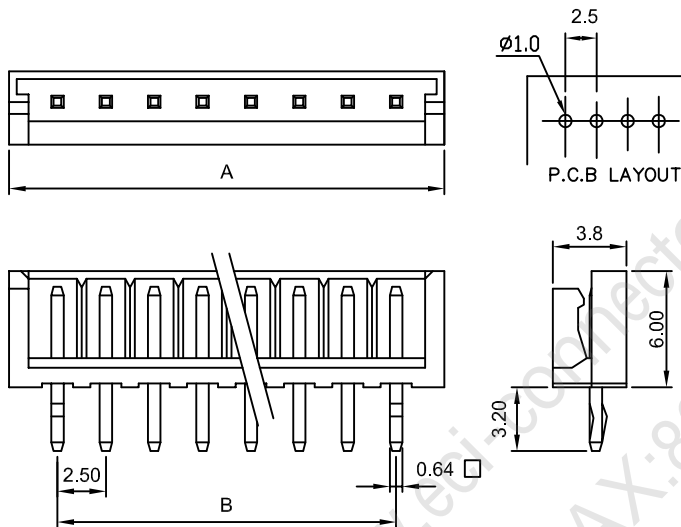


## 2570PS 2.5mm PITCH 180° WAFER

**Features:**

unit:mm

- MAT'L:BODY: NYLON 66 UL94V-0
- PINS : BRASS TIN PLATED
- MATES WITH: 2570H SERIES HOUSING
- ACCEPTS WITH: 2570 SERIES TERMINAL



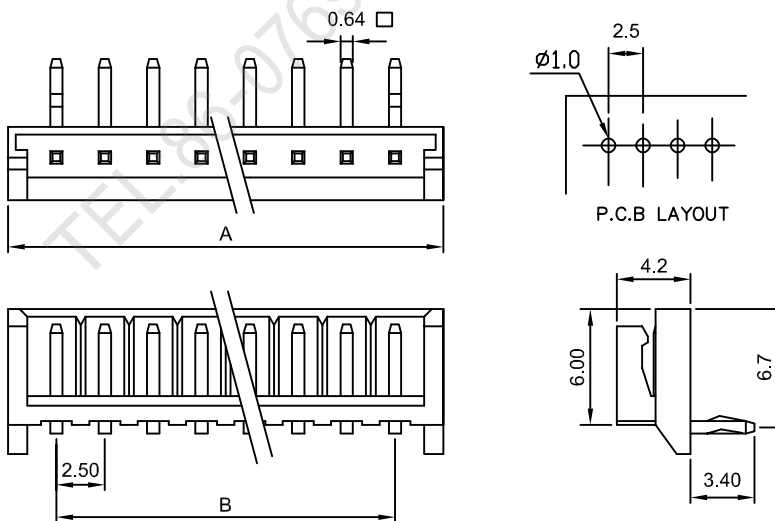
PART NO.	A	B
2570PS- 02	7.5	2.5
2570PS- 03	10.0	5.0
2570PS- 04	12.5	7.5
2570PS- 05	15.0	10.0
2570PS- 06	17.5	12.5
2570PS- 07	20.0	15.0
2570PS- 08	22.5	17.5
2570PS- 09	25.0	20.0
2570PS- 10	27.5	22.5
2570PS- 11	30.0	25.0
2570PS- 12	32.5	27.5
2570PS- 13	35.0	30.0
2570PS- 14	37.5	32.5
2570PS- 15	40.0	35.0

## 2570PR 2.5mm PITCH 90° WAFER

**Features:**

unit:mm

- MAT'L:BODY: NYLON 66 UL94V-0
- PINS : BRASS TIN PLATED
- MATES WITH: 2570H SERIES HOUSING
- ACCEPTS WITH: 2570 SERIES TERMINAL



PART NO.	A	B
2570PR- 02	7.5	2.5
2570PR- 03	10.0	5.0
2570PR- 04	12.5	7.5
2570PR- 05	15.0	10.0
2570PR- 06	17.5	12.5
2570PR- 07	20.0	15.0
2570PR- 08	22.5	17.5
2570PR- 09	25.0	20.0
2570PR- 10	27.5	22.5
2570PR- 11	30.0	25.0
2570PR- 12	32.5	27.5
2570PR- 13	35.0	30.0
2570PR- 14	37.5	32.5
2570PR- 15	40.0	35.0