

H13H

SERIES

1.25mm PITCH WIRE TO BOARD CONNECTOR

● Specifications

Current rating: 1A AC,DC

Voltage rating: 100V AC,DC

Temperature range: -25°C to $+85^{\circ}\text{C}$
(including temperature rise)

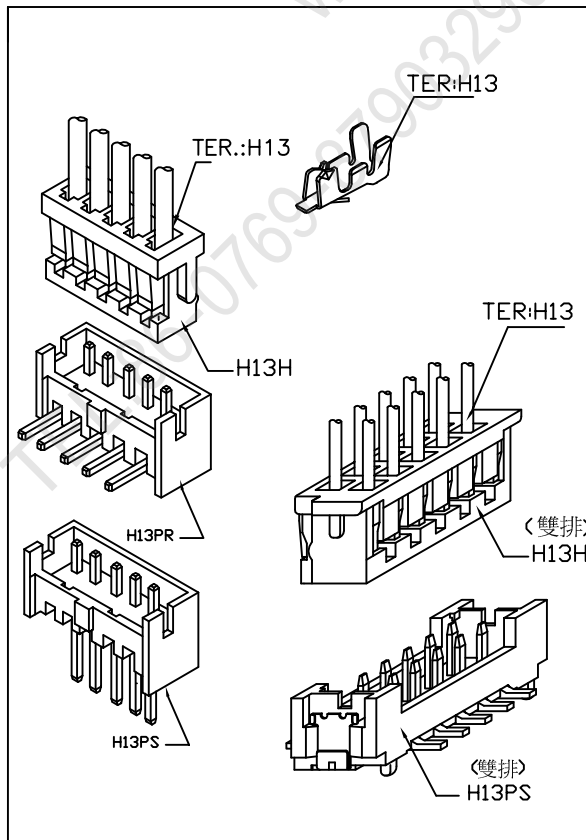
Contact resistance: Initial value/10m Ω Max.
After environmental testing/20m Ω Max.

Insulation resistance: 500M Ω MIN.

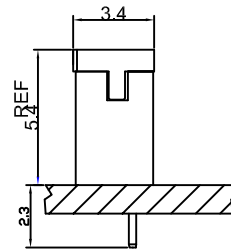
Withstanding voltage: 500V AC/minute

Applicable wire: AWG#26-30(H13)

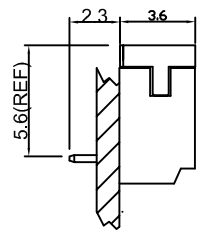
● Standards



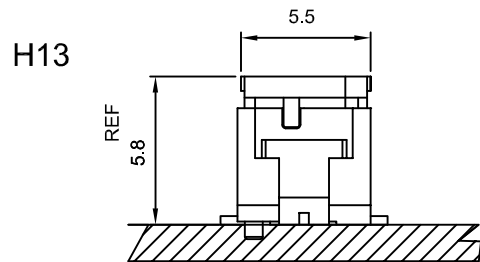
Assembly layout



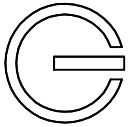
SMT SYPE



SMT SYPE



SMT SYPE

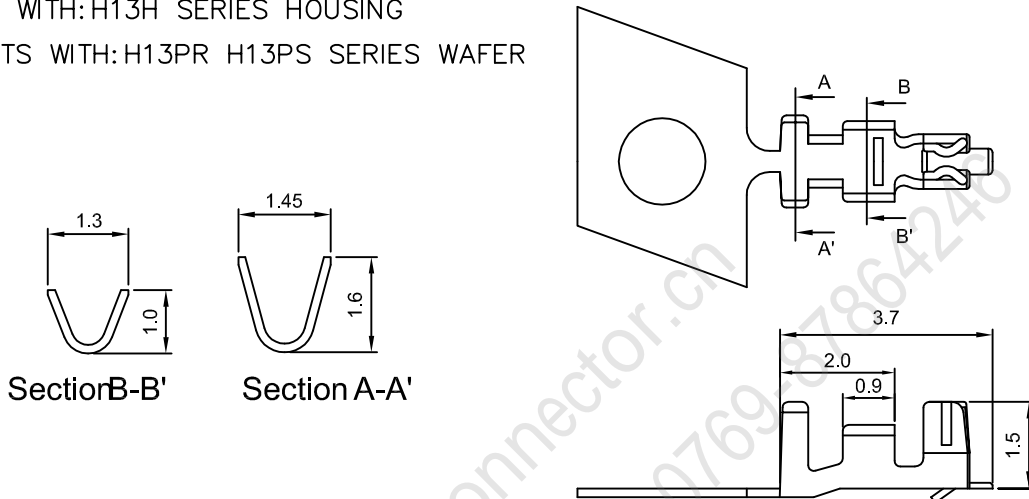


H13 1.25mm PITCH TERMINAL

Features:

unit: mm

- THICKNESS: 0.15mm
- MATES WITH: H13H SERIES HOUSING
- ACCEPTS WITH: H13PR H13PS SERIES WAFER



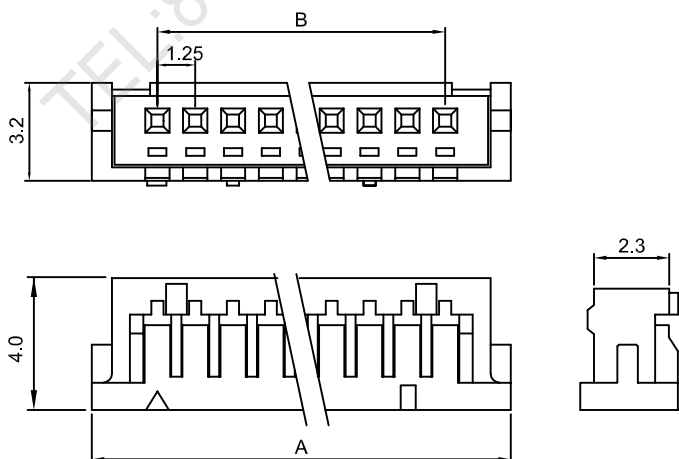
Part No	Wire Range	Insulation O.D.	Material	Finish	Qty/reel
H13	AWG#26-30	∅0.65 ~ ∅1.0mm	Brass	Tin-plated	10,000
H13-P	AWG#26-30	∅0.65 ~ ∅1.0mm	Phosphor Bronze	Tin-plated	10,000

H13H 1.25mm PITCH HOUSING

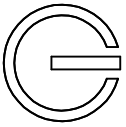
Features:

- MAT'L: NYLON 66 UL94V-0
- MATES WITH: H13 SERIES TERMINAL
- ACCEPTS WITH: H13PR H13PS SERIES WAFER

unit: mm



PART NO.	A	B
H13H-02	3.05	1.25
H13H-03	4.30	2.50
H13H-04	5.55	3.75
H13H-05	6.80	5.00
H13H-06	8.05	6.25
H13H-07	9.30	7.50
H13H-08	10.55	8.75
H13H-09	11.80	10.00
H13H-10	13.05	11.25
H13H-11	14.30	12.50
H13H-12	15.55	13.75
H13H-13	16.80	15.00
H13H-14	18.05	16.25
H13H-15	19.50	17.50



H13H

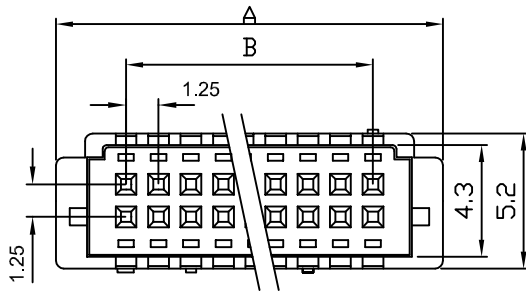
1.25mm PITCH HOUSING

Features:

MAT'L: NYLON 66 UL94V-0

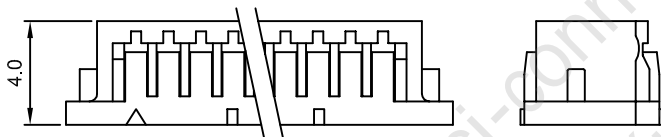
MATES WITH: H13 SERIES TERMINAL

ACCEPTS WITH: H13PS(??) SERIES WAFER



unit: mm

PART NO.	A	B
H13H-(2X5)	10.40	5.00
H13H-(2X10)	16.65	11.25
H13H-(2X15)	22.90	17.50
H13H-(2X20)	29.15	23.75



H13PS

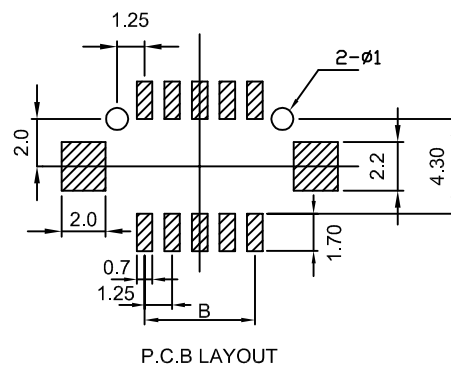
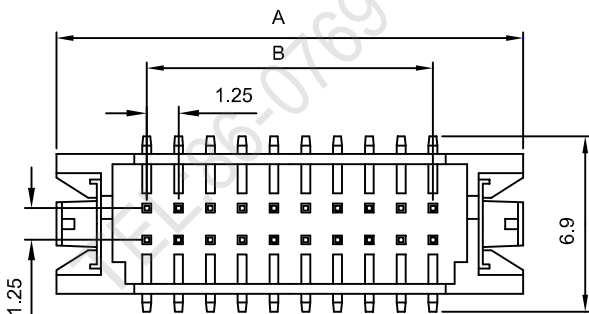
1.25mm PITCH 180° WAFER

Features:

MAT'L: NYLON 66 UL94V-0

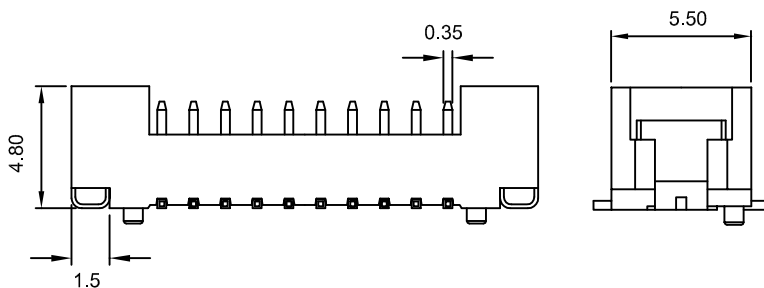
MATES WITH: H13H SERIES HOUSING

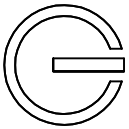
ACCEPTS WITH: H13 SERIES TERMINAL



unit: mm

PART NO.	A	B
H13PS-10	12.10	5.00
H13PS-20	18.35	11.25
H13PS-30	24.60	17.50
H13PS-40	30.85	23.75





H13PS

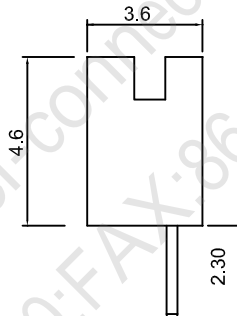
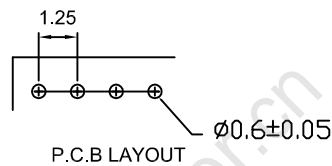
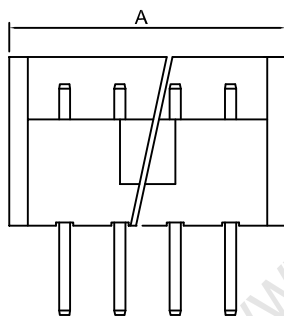
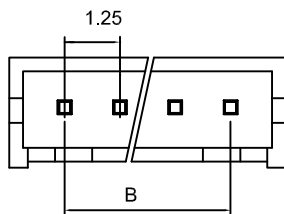
1.25mm PITCH 180° WAFER

Features:

MAT'L: NYLON 66 UL94V-0

ACCEPTS WITH: H13H SERIES HOUSING

MATES WITH: H13 SERIES TERMINAL



unit: mm

PART NO.	A	B
H13PS-02	3.75	1.25
H13PS-03	5.00	2.50
H13PS-04	6.25	3.75
H13PS-05	7.50	5.00
H13PS-06	8.75	6.25
H13PS-07	10.0	7.50
H13PS-08	11.25	10.00
H13PS-09	12.50	11.25
H13PS-10	13.75	12.50
H13PS-11	15.00	13.75
H13PS-12	16.25	15.00
H13PS-13	17.50	16.25
H13PS-14	18.75	17.50
H13PS-15	20.00	17.50

H13PR

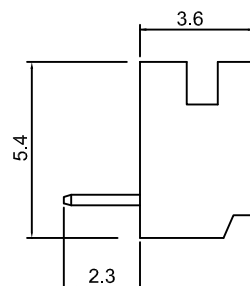
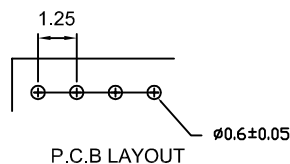
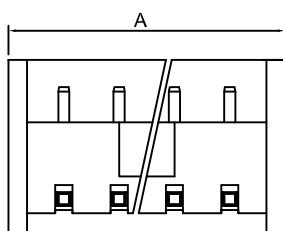
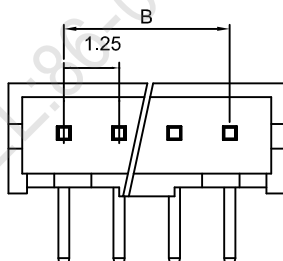
1.25mm PITCH 90° WAFER

Features:

MAT'L: NYLON 66 UL94V-0

MATES WITH: H13H SERIES HOUSING

ACCEPTS WITH: H13 SERIES TERMINAL



unit: mm

PART NO.	A	B
H13PR- 02	3.75	1.25
H13PR- 03	5.00	2.50
H13PR- 04	6.25	3.75
H13PR- 05	7.50	5.00
H13PR- 06	8.75	6.25
H13PR- 07	10.0	7.50
H13PR- 08	11.25	10.00
H13PR- 09	12.50	11.25
H13PR- 10	13.75	12.50
H13PR- 11	15.00	13.75
H13PR- 12	16.25	15.00
H13PR- 13	17.50	16.25
H13PR- 14	18.75	17.50
H13PR- 15	20.00	17.50