

# E001H SERIES

1.0mm PITCH WIRE TO BOARD CONNECTOR

## ● Specifications

Current rating: 1A AC,DC

Voltage rating: 50V AC,DC

Temperature range:  $-25^{\circ}\text{C}$  to  $+85^{\circ}\text{C}$   
(including temperature rise)

Contact resistance: Initial value/20m  $\Omega$  Max.

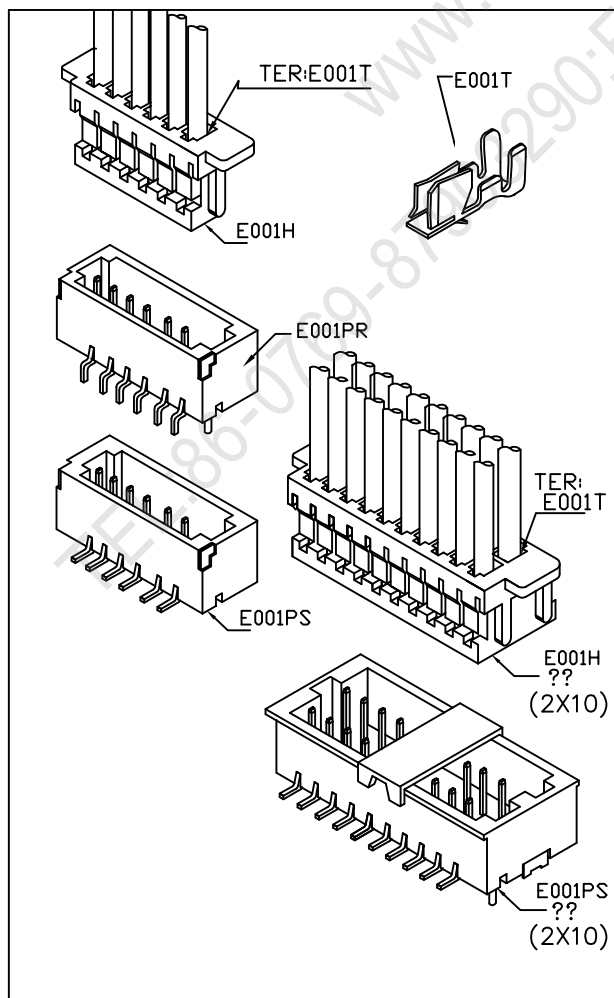
After environmental testing/20m  $\Omega$  Max.

Insulation resistance: 100M $\Omega$  MIN

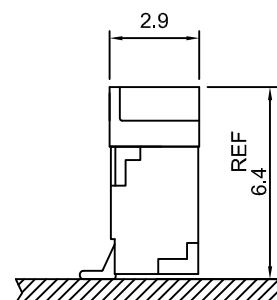
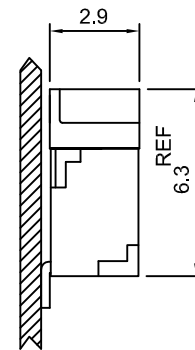
Withstanding voltage: 500V AC/minute

Applicable wire: AWG#28~32

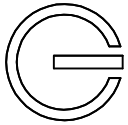
## ● Standards



## ● Assembly layout



SMT TYPE

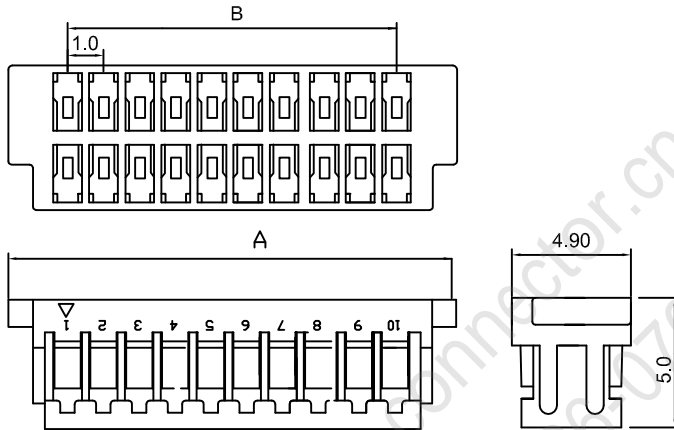


**E001H (雙排) 1.0mm PITCH CRIMP HOUSING**

**Features:**

MAT'L: PBT UL 94V-0  
 MATES WITH: E001T SERIES TERMINAL  
 ACCEPTS WITH: E001PS (??) SERIES WAFER

unit: mm

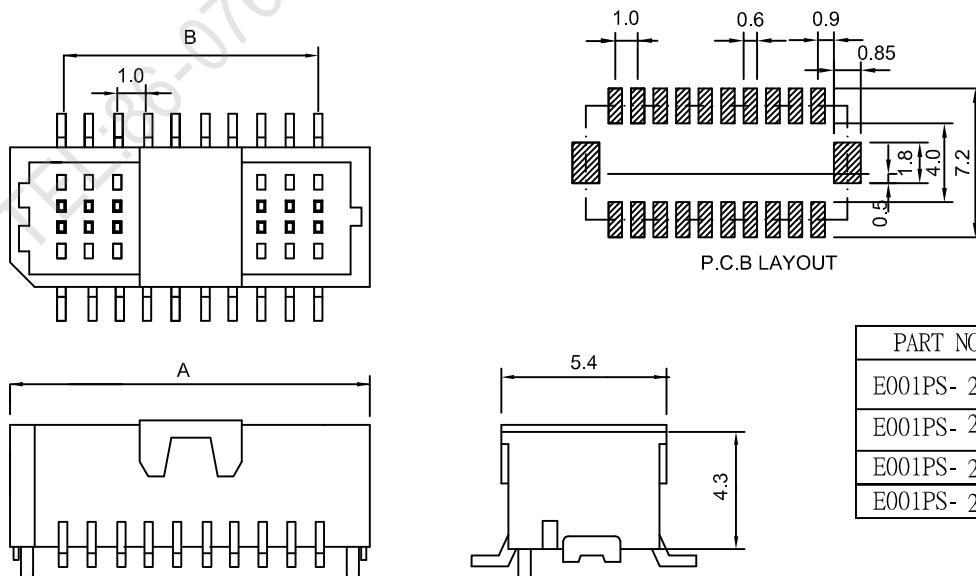


PART NO.	A	B
E001H-2X10	13.0	9.0
E001H-2X15	18.0	14.0
E001H-2X20	23.0	19.0
E001H-2X25	28.0	24.0

**E001PS (雙排) 1.0mm PITCH CRIMP 90° WAFER**

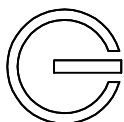
**Features:**

MAT'L: NYLON 66 UL94V-0  
 MATES WITH: E001T SERIES TERMINAL  
 ACCEPTS WITH: E001H (??) SERIES HOUSING



unit: mm

PART NO.	A	B
E001PS- 2X10	12.3	9.0
E001PS- 2X15	17.3	14.0
E001PS- 2X20	22.3	19.0
E001PS- 2X25	27.3	24.0



# E001H (單排) 1.0mm PITCH CRIMP HOUSING

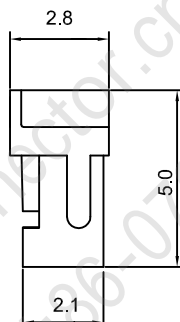
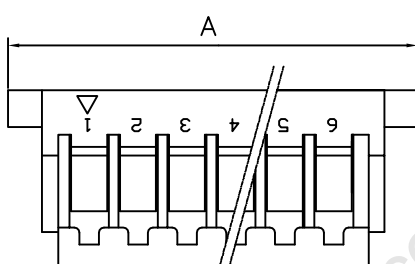
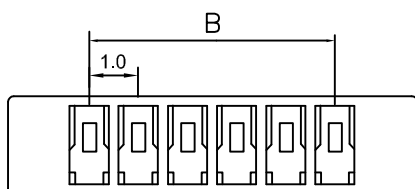
## Features:

MAT'L: PBT 66 UL94V-0

MATES WITH: E001T SERIES TERMINAL

ACCEPTS WITH: E001PS & E001PR SERIES WAFER

unit: mm



PART NO.	A	B
E001H-1X02	5.0	1.0
E001H-1X03	6.0	2.0
E001H-1X04	7.0	3.0
E001H-1X05	8.0	4.0
E001H-1X06	9.0	5.0
E001H-1X07	10.0	6.0
E001H-1X08	11.0	7.0
E001H-1X09	12.0	8.0
E001H-1X10	13.0	9.0
E001H-1X11	14.0	10.0
E001H-1X12	15.0	11.0
E001H-1X13	16.0	12.0
E001H-1X14	17.0	13.0
E001H-1X15	18.0	14.0
E001H-1X16	19.0	15.0
E001H-1X17	20.0	16.0
E001H-1X18	21.0	17.0
E001H-1X19	22.0	18.0
E001H-1X20	23.0	19.0

# E001T 1.0mm PITCH CRIMP TERMINAL

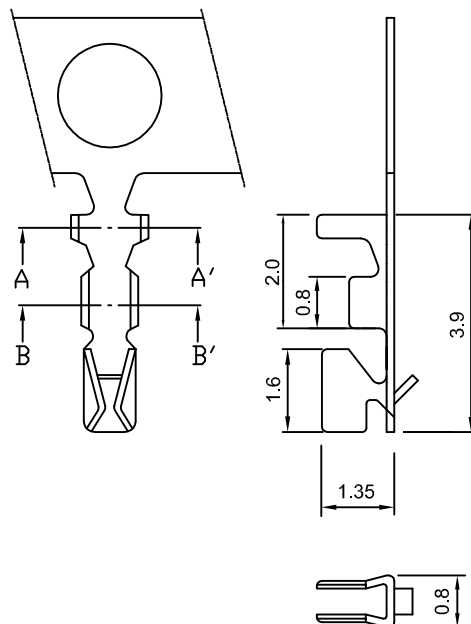
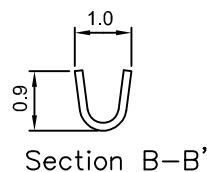
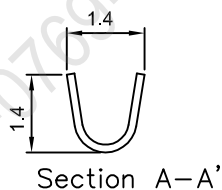
unit: mm

## Features:

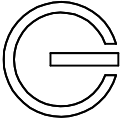
THICKNESS: 0.12mm

MAT'L: PHOSPHOR BRONZE TIN PLATED

MATES WITH: E001H SERIES HOUSING



Part No	Wire Range	Insulation O.D.	Material	Finish	Qty/reel
E001H	AWG#28-32	ø0.75mm max	PHOSPHOR BRONZE	Tin-plated	15000



# E001PR

1.0mm PITCH CRIMP 90° WAFER

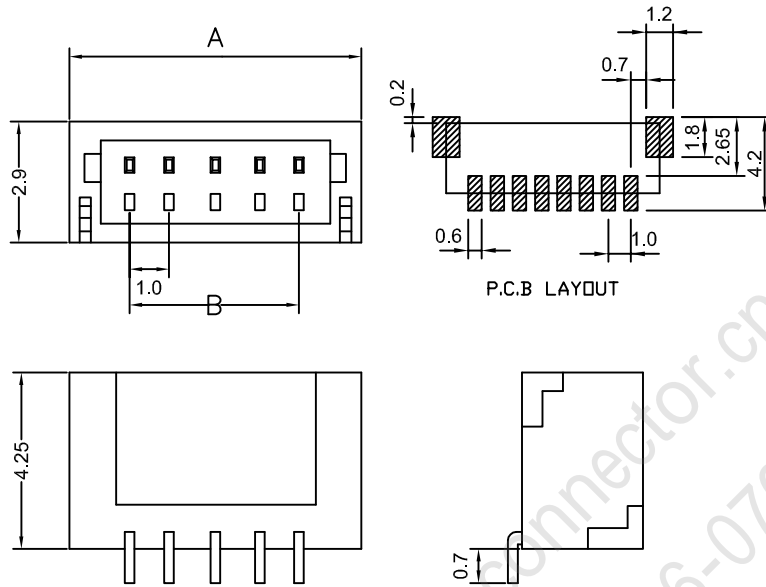
## Features:

MAT'L: NYLON 66 UL 94V-0

MATES WITH: E001H SERIES HOUSING

ACCEPTS WITH: E001T SERIES TERMINAL

unit:mm



PART NO.	A	B
E001PR-02	4.0	1.0
E001PR-03	5.0	2.0
E001PR-04	6.0	3.0
E001PR-05	7.0	4.0
E001PR-06	8.0	5.0
E001PR-07	9.0	6.0
E001PR-08	10.0	7.0
E001PR-09	11.0	8.0
E001PR-10	12.0	9.0
E001PR-11	13.0	10.0
E001PR-12	14.0	11.0
E001PR-13	15.0	12.0
E001PR-14	16.0	13.0
E001PR-15	17.0	14.0

# E001PS

1.0mm PITCH CRIMP 180° WAFER

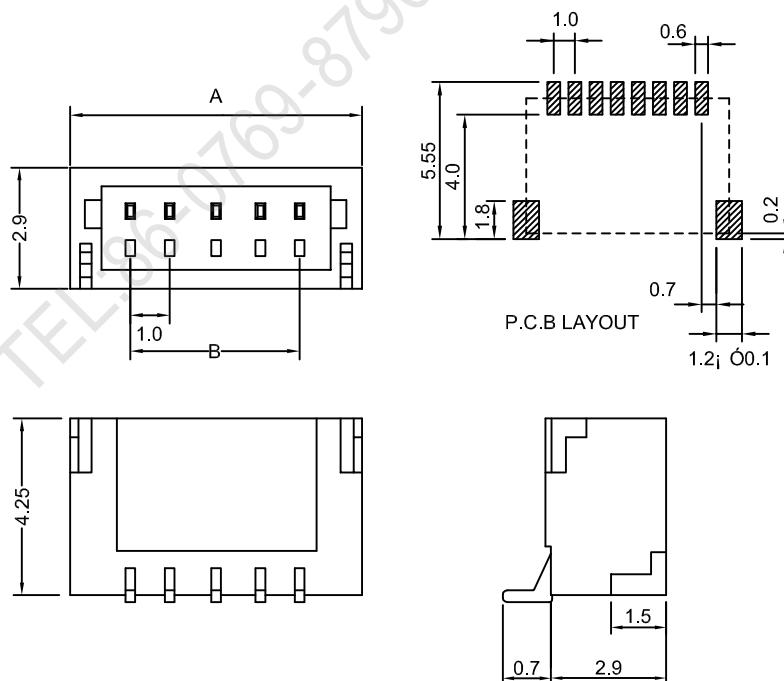
## Features:

MAT'L: NYLON 66 UL 94V-0

MATES WITH: E001H SERIES HOUSING

ACCEPTS WITH: E001T SERIES TERMINAL

unit:mm



PART NO.	A	B
E001PS-02	4.0	1.0
E001PS-03	5.0	2.0
E001PS-04	6.0	3.0
E001PS-05	7.0	4.0
E001PS-06	8.0	5.0
E001PS-07	9.0	6.0
E001PS-08	10.0	7.0
E001PS-09	11.0	8.0
E001PS-10	12.0	9.0
E001PS-11	13.0	10.0
E001PS-12	14.0	11.0
E001PS-13	15.0	12.0
E001PS-14	16.0	13.0
E001PS-15	17.0	14.0