

2550 SERIES

2.54 mm PITCH WIRE TO BOARD CONNECTOR

● Specifications

Current rating: 1A AC,DC

Voltage rating: 250V AC,DC

Temperature range: -25° C to +85° C

(including temperature rise)

Contact resistance: Initial value/20m Ω Max.

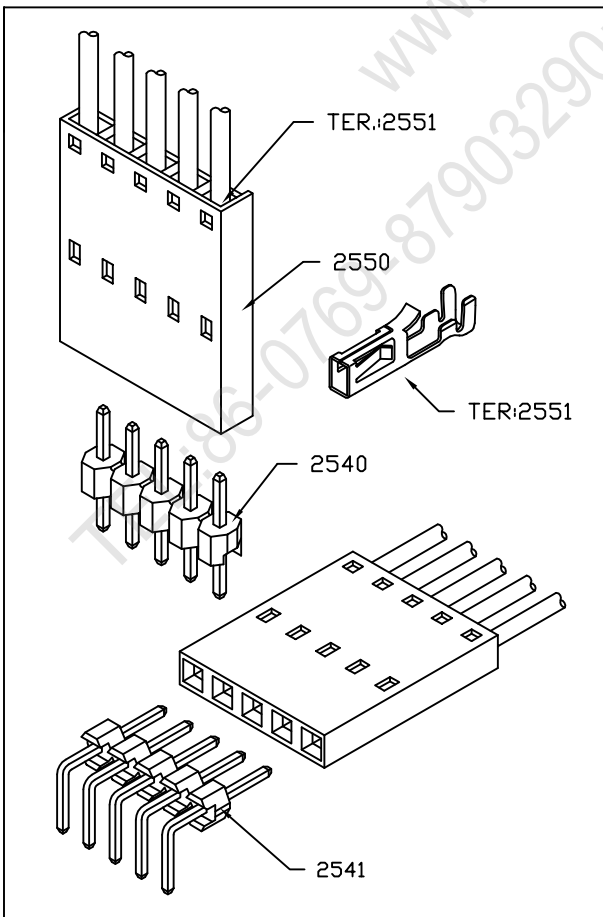
After environmental testing/20m Ω Max.

Insulation resistance: 1000M Ω MIN.

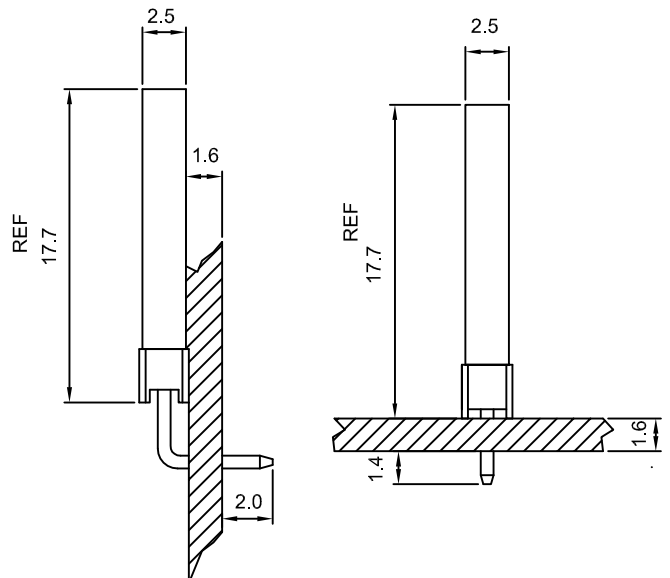
Withstanding voltage: 1000V AC/minute

Applicable wire: AWG#24-28

● Standards



Assembly layout





2550

2.54mm PITCH CRIMP HOUSING

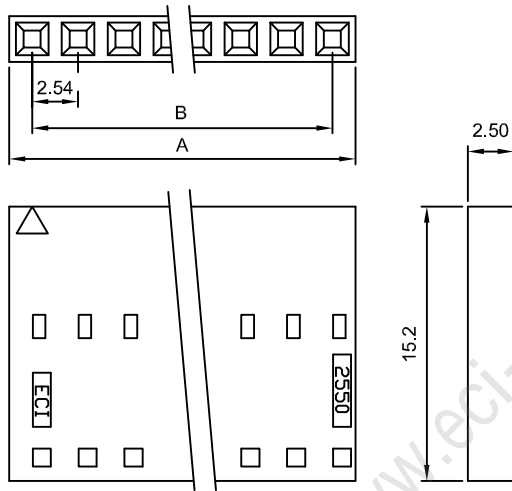
Features:

MAT'L: PBT UL94V-0

MATES WITH 2551 SERIES TERMINAL

ACCEPTS WITH: 2540 OR 2541 SERIES WAFER

unit:mm



PART NO.	A	B	PART NO.	A	B
2550-02	5.05	2.54	2550-14	35.53	33.02
2550-03	7.59	5.08	2550-15	38.07	35.56
2550-04	10.13	7.62	2550-16	40.61	38.10
2550-05	12.67	10.16	2550-17	43.15	40.64
2550-06	15.21	12.70	2550-18	45.69	43.18
2550-07	17.75	15.24	2550-19	48.23	45.72
2550-08	20.29	17.17	2550-20	50.77	48.26
2550-09	22.83	20.32	2550-21	53.31	50.80
2550-10	25.37	22.86	2550-22	55.85	53.34
2550-11	27.91	25.40	2550-23	58.39	55.88
2550-12	30.45	27.94	2550-24	60.93	58.42
2550-13	32.99	30.48	2550-25	63.47	60.96

2551

2.54mm PITCH CRIMP TERMINAL

Features:

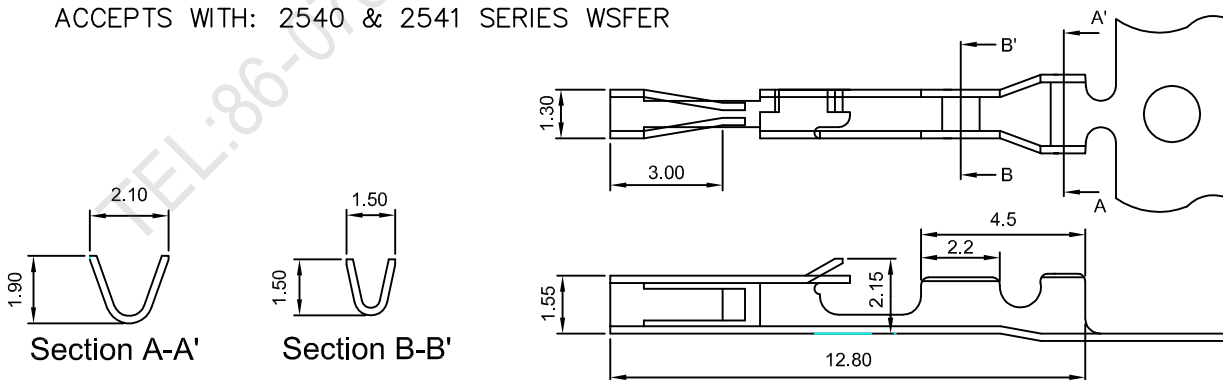
THICKNESS: 0.2mm

MAT'L: PHOSPHOR BRONZE TIN OR GOLD PLATED

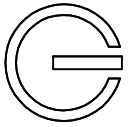
MATES WITH: 2550 SERIES HOUSING

ACCEPTS WITH: 2540 & 2541 SERIES WAFER

unit:mm



Part No	Wire Range	Insulation O.D.	Material	Finish	Qty/reel
2551-P	#24-#28	ø1.7mm max	PHOSPHOR BRONZE	TIN OR GOLD PLATED	10,000



2550H-K 2.54mm PITCH CRIMP HOUSING

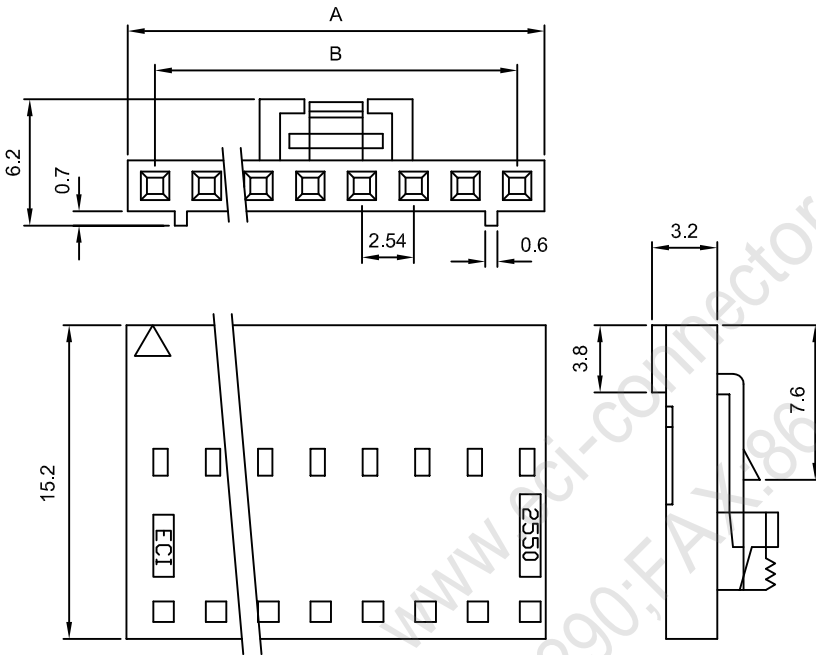
Features:

MAT'L: PBT UL94V-0

MATES WITH 2551 SERIES TERMINAL

ACCEPTS WITH: 2550PS-K & 2550PR-K SERIES WAFER

unit:mm



PART NO.	A	B
2550H- 02K	5.05	2.54
2550H- 03K	7.59	5.08
2550H- 04K	10.13	7.62
2550H- 05K	12.67	10.16
2550H- 06K	15.21	12.70
2550H- 07K	17.75	15.24
2550H- 08K	20.29	17.77
2550H- 09K	22.83	20.32
2550H- 10K	25.37	22.86
2550H- 11K	27.91	25.40
2550H- 12K	30.45	27.94
2550H- 13K	32.99	30.48
2550H- 14K	35.53	33.02
2550H- 15K	38.07	35.56
2550H- 16K	40.61	38.10
2550H- 17K	43.15	40.64
2550H- 18K	45.69	43.18
2550H- 19K	48.23	45.72
2550H- 20K	50.77	48.26
2550H- 21K	53.31	50.80
2550H- 22K	55.85	53.34
2550H- 23K	58.39	55.88
2550H- 24K	60.93	58.42
2550H- 25K	63.47	60.96

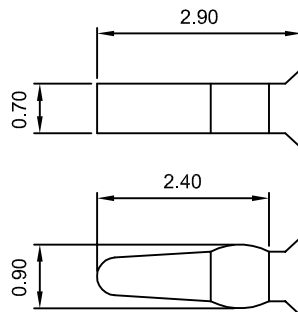
2550KEY SERIES KEY

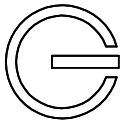
Features:

MAT'L: NYLON 66 UL 94V-0

MATES WITH: 2550 SERIES HOUSING

unit:mm





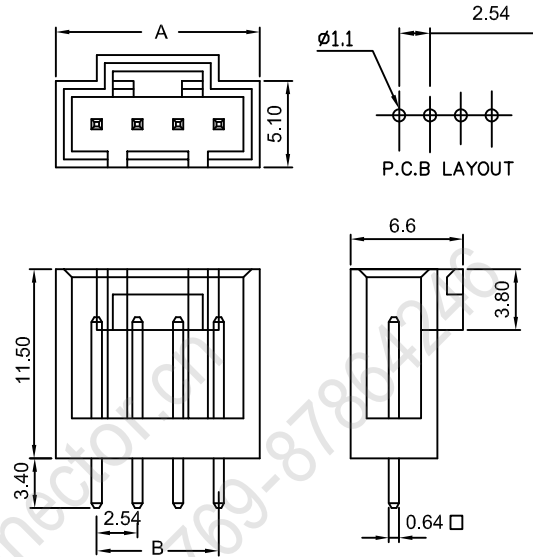
2550PS-K 2.54mm PITCH 180° WAFER

Features:

MAT'L: BODY: NORYL 94V-1
 PINS: BRASS TIN PLATED
 MATES WITH: 2551 SERIES TERMINAL
 ACCEPTS WITH 2550H-K SERIES HOUSING

unit:mm

PART NO.	A	B	PART NO.	A	B
2550PS-02K	7.62	2.54	2550PS-12K	33.02	27.94
2550PS-03K	10.16	5.08	2550PS-13K	35.56	30.48
2550PS-04K	12.70	7.62	2550PS-14K	38.10	33.02
2550PS-05K	15.24	10.16	2550PS-15K	40.64	35.56
2550PS-06K	17.78	12.70	2550PS-16K	43.18	38.10
2550PS-07K	20.32	15.24	2550PS-17K	45.72	40.64
2550PS-08K	22.86	17.78	2550PS-18K	48.26	43.18
2550PS-09K	25.40	20.32			
2550PS-10K	27.94	22.86			
2550PS-11K	30.48	25.40			



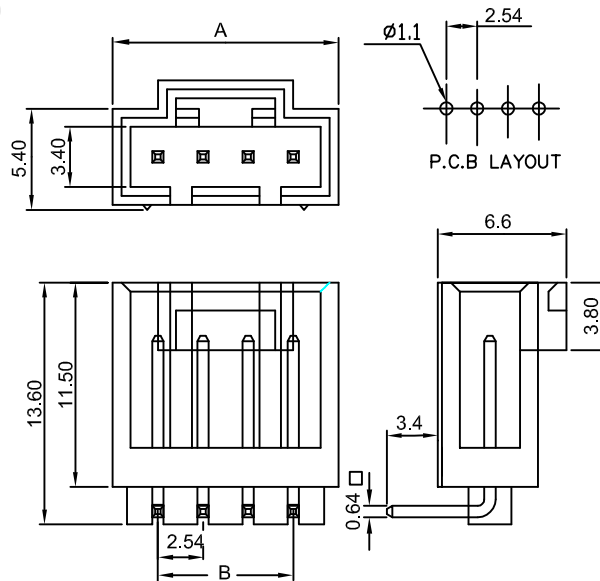
2550PR-K 2.54mm PITCH 90° WAFER

Features:

MAT'L: BODY: NORYL 94V-1
 PINS: BRASS TIN PLATED
 MATES WITH: 2551 SERIES TERMINAL
 ACCEPTS WITH 2550H-K SERIES HOUSING

unit:mm

PART NO.	A	B
2550PR-02K	7.62	2.54
2550PR-03K	10.16	5.08
2550PR-04K	12.70	7.62
2550PR-05K	15.24	10.16
2550PR-06K	17.78	12.70
2550PR-07K	20.32	15.24
2550PR-08K	22.86	17.78
2550PR-09K	25.40	20.32
2550PR-10K	27.94	22.86
2550PR-11K	30.48	25.40
2550PR-12K	33.02	27.94
2550PR-13K	35.56	30.48
2550PR-14K	38.10	33.02
2550PR-15K	40.64	35.56
2550PR-16K	43.18	38.10
2550PR-17K	45.72	40.64
2550PR-18K	48.26	43.18





2550HK/2550CH SERIES

2.54 mm PITCH WIRE TO BOARD CONNECTOR

● Specifications

Current rating: 3A AC,DC

Voltage rating: 250V AC,DC

Temperature range: -25° C to+85° C
(including temperature rise)

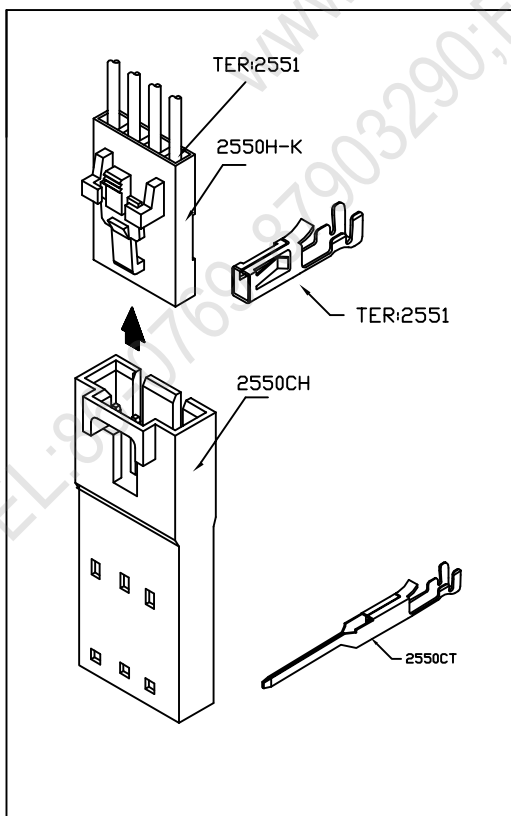
Contact resistance: Initial value/10m Ω Max.
After environmental testing/20m Ω Max.

Insulation resistance: 500M Ω MIN.

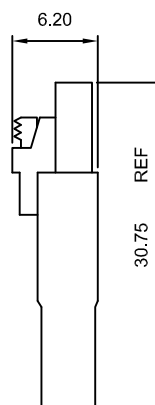
Withstanding voltage: 1000V AC/minute

Applicable wire: AWG#24-28

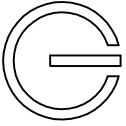
● Standards



Assembly layout



WIRE TO WIRE



2550K SERIES

2.54 mm PITCH WIRE TO BOARD CONNECTOR

● Specifications

Current rating: 1A AC,DC

Voltage rating: 250V AC,DC

Temperature range: 25°C to +85°C
(including temperature rise)

Contact resistance: Initial value/20m Ω Max.

After environmental testing/20m Ω Max.

Insulation resistance: 1000M Ω MIN.

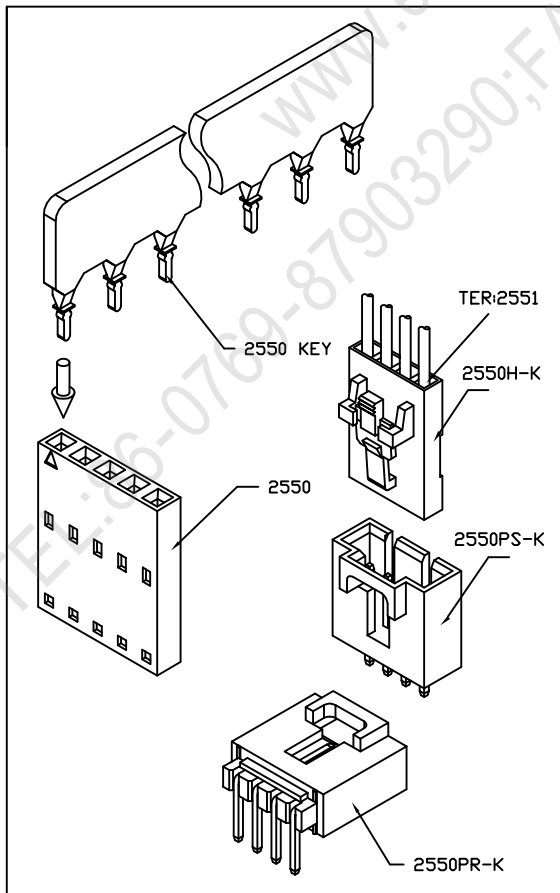
Withstanding voltage: 1000V AC/minute

Applicable wire: AWG#24-28

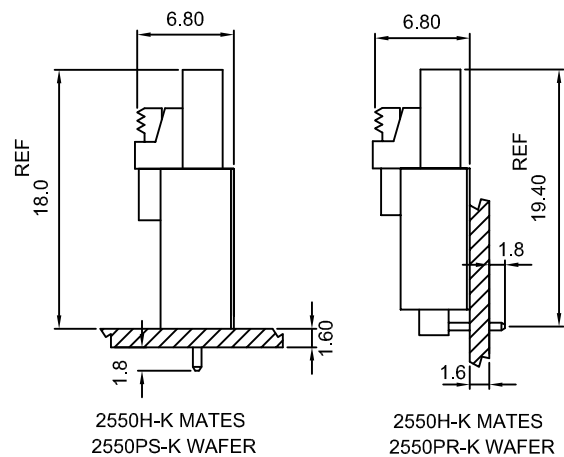
● Standards

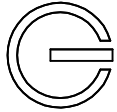


E115256



Assembly layout





2550CH

2.54mm PITCH HOUSING

Features:

MAT'L: BODY: NORYL 94V-0

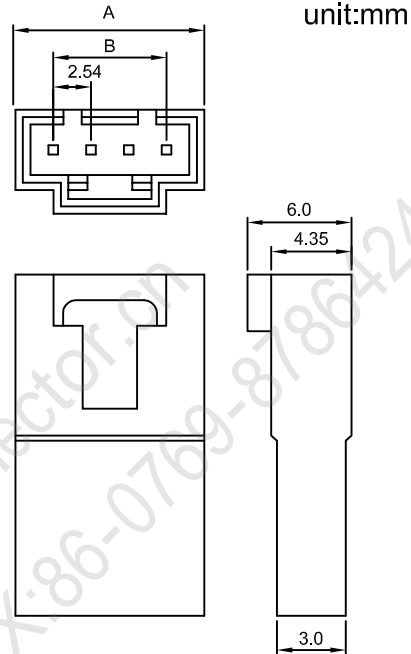
PINS: BRASS TIN PLATED

MATES WITH: 2550CT SERIES TERMINAL

ACCEPTS WITH 2550H-K SERIES HOUSING

PART NO.	A	B
2550CH-02	7.12	2.54
2550CH-03	9.66	5.08
2550CH-04	12.20	7.62
2550CH-05	14.74	10.16
2550CH-06	17.28	12.70
2550CH-07	19.82	15.24
2550CH-08	22.36	17.78
2550CH-09	24.90	20.32
2550CH-10	27.44	22.86
2550CH-11	29.98	25.40
2550CH-12	32.52	27.94
2550CH-13	35.06	30.48
2550CH-14	37.60	33.02
2550CH-15	40.14	35.56
2550CH-16	42.68	38.10
2550CH-17	45.22	40.64
2550CH-18	47.76	43.18

PART NO.	A	B
2550CH-19	50.30	45.72
2550CH-20	52.84	48.26
2550CH-21	55.38	50.80
2550CH-22	57.92	53.34
2550CH-23	60.46	55.88
2550CH-24	63.00	58.42
2550CH-25	65.54	60.96



2550CT

2.54mm PITCH TERMINAL

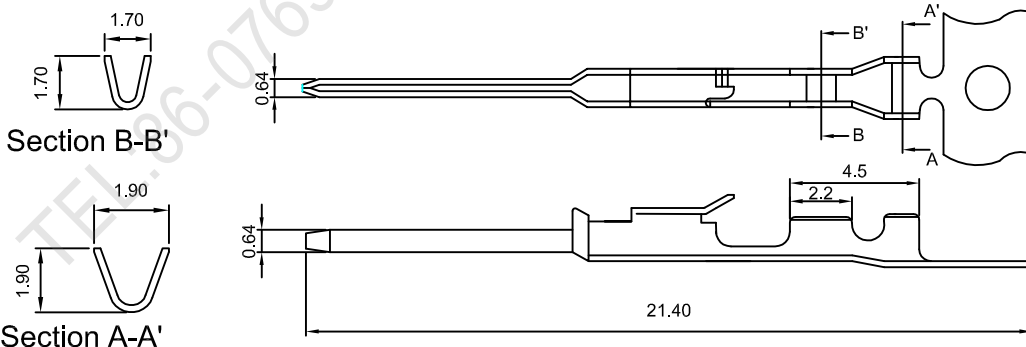
Features:

THICKNESS: 0.2mm

MAT'L: BRASS TIN PLATED

MATES WITH: 2550CH SERIES HOUSING

ACCEPTS WITH: 2551 SERIES TERMINAL



Part No	Wire Range	Insulation O.D.	Material	Finish	Qty/reel
2550CT	AWG#24-#28		BRASS	TIN PLATED	